

RX40 Scissor Lift Rack

For precision wheel alignment measurements on cars, vans, and light trucks up to 4,000 Kg



HUNTER
Engineering Company

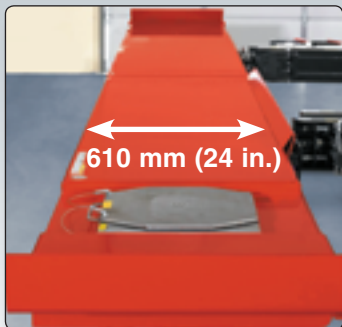
RX40 Scissor Lift

Large capacity with a small footprint

STANDARD

EXCLUSIVE

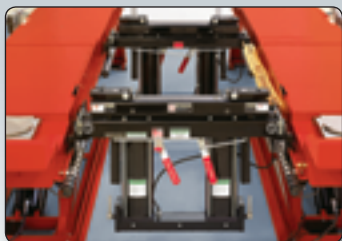
Extra-Wide Runways



- ✓ 610 mm (24 in.) runways accept wide vehicles
- ✓ Inner rub rail for safety

OPTIONAL

Swing Air Jack



- ✓ Open front and rear for maximum access
- ✓ Jack capacity: 2,041 kg. (4,500 lbs.)

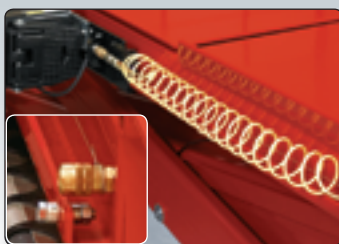
PATENTED

Sensor Feedback System*



- ✓ Sensors keep runway level
- ✓ Safely stops if obstructed

Integrated Air Line Kit



- ✓ Convenient air source for tools at front and rear

EXCLUSIVE

Two Movable Work



STANDARD

Velocity Safety Fuses



- ✓ Instantaneous shutdown in event of hydraulic failure

EXCLUSIVE

Safety Locks



* Shown with protective cover removed.

Work Steps



- ✓ 12 secure positions
- ✓ Lightweight design

EXCLUSIVE

Slipplate Gutters



- ✓ Guides water away for trouble-free operation

EXCLUSIVE

Louwered Ramps



- ✓ Prevent wheel spin in wet conditions
- ✓ More effective than diamond tread or abrasive strips (shown with optional ramp extension)

PATENTED

Control Panel



- ✓ Complete operation from the console
- ✓ Standard rear PowerSlide, slipplates, optional front PowerSlide turnplates, Inflation station and FIA control

PATENTED

Inflation Station (optional)



- ✓ Automatically inflates or deflates each tire
- ✓ No hanging air lines



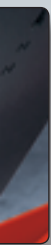
Shown with optional front PowerSlide turnplates and Inflation Station

STANDARD

Pins and Bearings



- ✓ Chromed pins and teflon bearings for long life

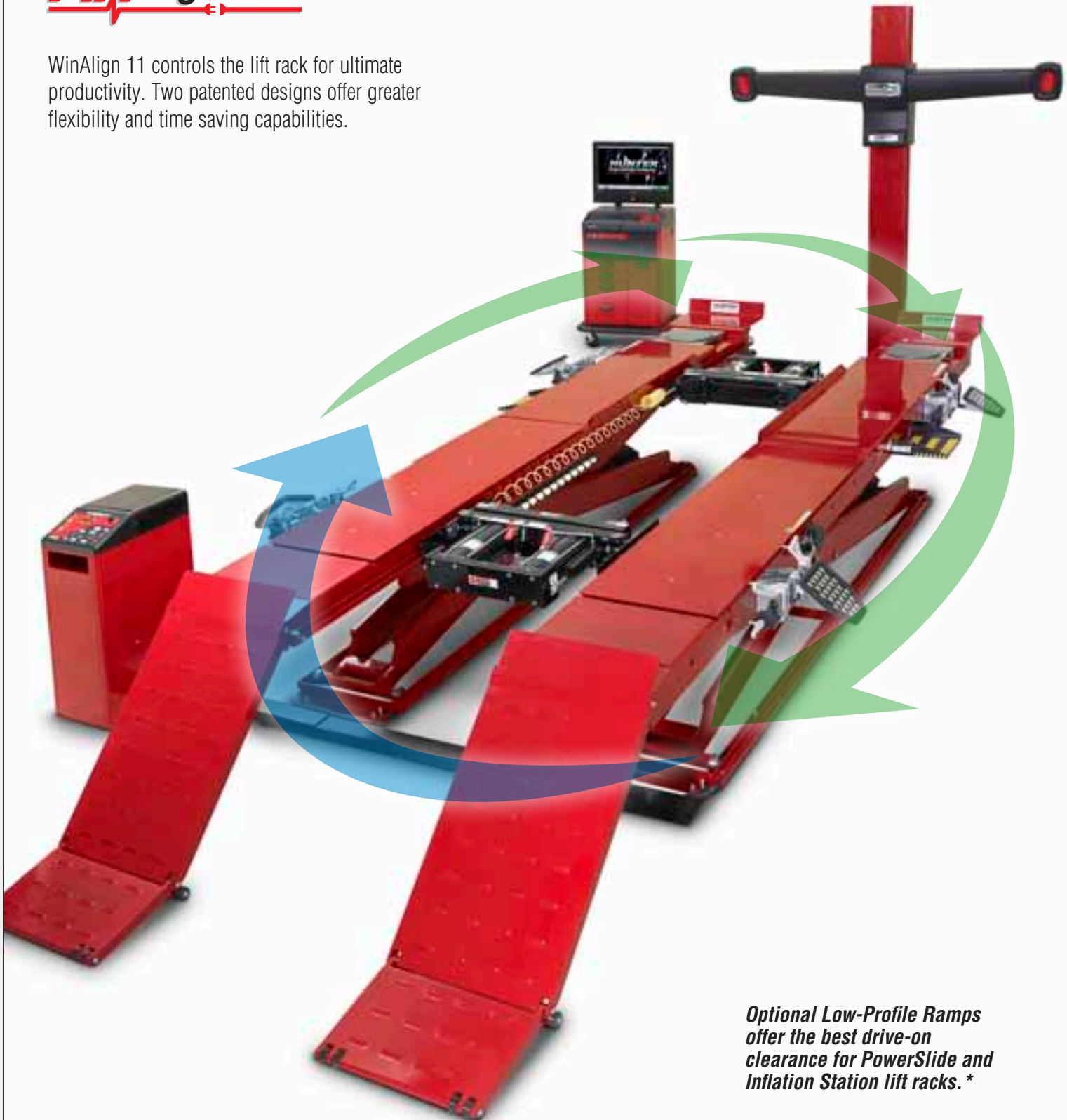


- ✓ Perform adjustments at 18 height positions

Hunter Offers Two Fully Integrated Options to Enhance Productivity



WinAlign 11 controls the lift rack for ultimate productivity. Two patented designs offer greater flexibility and time saving capabilities.



Optional Low-Profile Ramps offer the best drive-on clearance for PowerSlide and Inflation Station lift racks.*

Shown with optional aligner console, sensors, target support brackets, swing air jacks, and lights.

**RX40 models include low ramp but not stage 2.*

PATENTED

POWERSLIDE EDITION

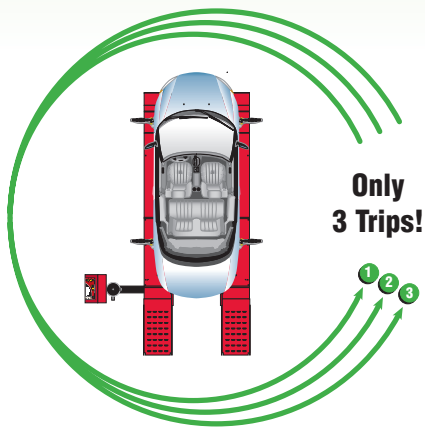


STANDARD



- ✓ Locks slipplates and optional turnplates with the touch of a button or automatically through an FIA-equipped aligner**
- ✓ No more struggles with lock pins
- ✓ Avoid wear and tear and extend the life of your turnplates

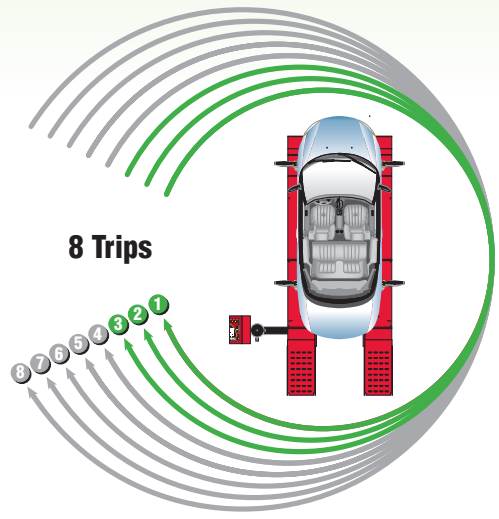
OPTIONAL



Minimize trips around the car

- 1 Mount Targets
- 2 Make Adjustments
- 3 Remove Targets
- 4 Jack Vehicle and Compensate Sensors
- 5 Lower Leveling Legs (if equipped)
- 6 Remove Slipplate and Turnplate Pins
- 7 Replace Slipplate and Turnplate Pins
- 8 Raise Leveling Legs (if equipped)

Yesterday's Technology



PATENTED

INFLATION STATION OPTION



- ✓ Includes POWERSLIDE®
- ✓ Automatically inflate or deflate all four tires simultaneously
- ✓ Record starting and final pressure**
- ✓ Hose recoils to keep work area clear



Printouts show starting and final tire pressures with WinAlign 11

** Requires WinAlign 11.x software or greater.

Optional Swing Air Jack

Hunter Swing Air Jack adds capabilities for lifting vehicles off the runways during alignment procedures and other multi-service operations.

The Swing Air Jack has a capacity of 2,041 kg. (4,500 lbs.). Swing Air Jack combines low drive-on height with high lift capacity needed to handle wide range of vehicles.

Add part number 133-67-1 to your order



Optional AlignLights Accessory

Hunter's AlignLights lighting accessory provides an efficient light source underneath the vehicle.

Lights shut down with lift lowered to the ground and turn back on when raised.

AlignLights are powered by the main lift power source and require no additional or exposed electrical cords.

Add part number 20-2173-1 to your order



RX40 Flush-Mount Scissor Lift

The RX Scissor Lift may also be flush-mounted in a shallow recess. No more worries about lowered vehicles or expensive spoilers! This very tidy installation is ideal for "showcase" shops.

See site requirements for installation details. No additional charge for flush-mount option.

Order model RX40-PE or RX40-IS-P-4E



RX40 Specifications



RX40

Max. Vehicle Gross Weight:	4000 kg (8,800 lbs.)
Max. Wheelbase:	General service 4445 mm (175 in.)
	Two-wheel alignment 4089 mm (161 in.)
	Four-wheel alignment 4013 mm (158 in.)
Deck Length:	5135 mm (202 in.)
Min. 4-Wheel Alignment:	2235 mm (88 in.)
Runway Width:	609 mm (24 in.)
Lowered Height:	229 mm (9 in.)

Alignment height	All lock positions
Max. lifting height	1829 mm (72 in.)
Tread width	
Min. inside	1016 mm (40 in.)
Max. outside	2235 mm (88 in.)
Motor	208-230/400V, 3-ph, 50/60 Hz, 9A
Air	90-120 psi (6.2 - 8.3 bar)

Models

RX40E	Surface Mount Lift without jacks
RX40-PE	Pit Mount Lift without jacks
RX40-IS-4E	Same as RX40E with Inflation Station
RX40-IS-P-4E	Same as RX40-PE with Inflation Station

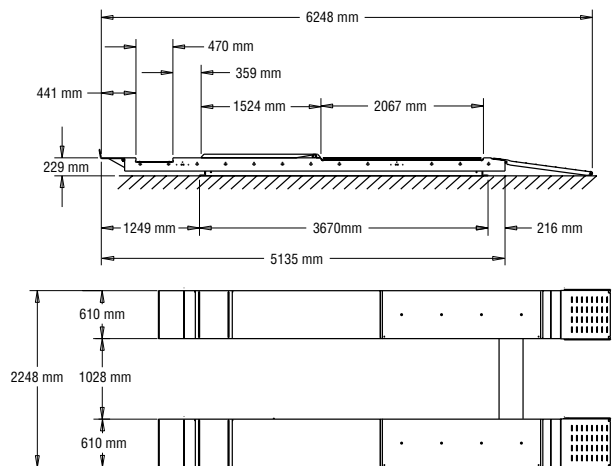
Standard Equipment

Two Movable Work Steps (not included with flush model)
 Front Wheel Stops
 Two Wheel Chocks
 Air Line Kit
 50 mm Deep Turnplate Pockets
 Full-Floating Rear Wheel Slipplates
 Louvered Ramps with Built-In Wheel Stops

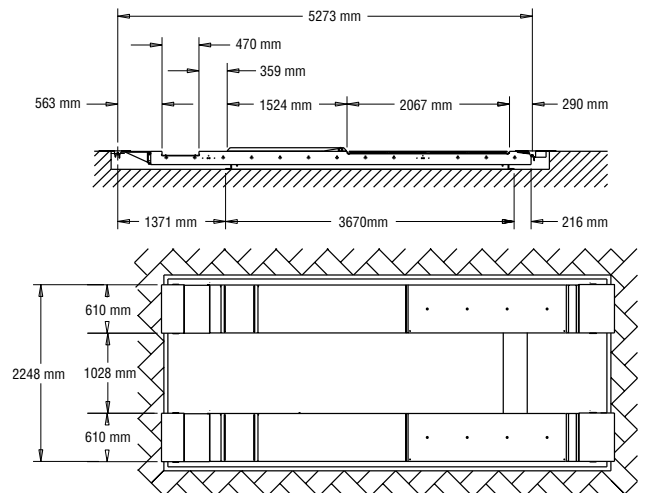
Optional Accessories

133-67-1	Swing Air Jack - 4,500 lb. (2041Kg) Capacity
20-2173-1	AlignLight Kit - Marine-grade fluorescent lighting kit
20-1638-1	Moveable Tool Tray— with expandable slots for organizing and storage
20-2076-1	Powerslide Turnplates with automatic bridges (used with camera sensor based alignment system)
20-2075-1	Powerslide Turnplates (used with conventional electronic sensor alignment system)
20-1849-1	Standard powder-coat painted 50 mm mechanical turnplates (set of 2)
20-2106-1	Stainless-steel 50 mm mechanical turnplates (set of 2)
20-1680-1	Drive-Through kit
147-104-1	Stage 2 RX Approach Ramp Extension – adds 324 mm (12.75 in.) to the length of RX40 lift ramps (2 required)
147-113-1	Stage 2 RX Approach Ramp Extension – adds 451 mm (17.75 in.) to the length of RX40E lift ramps (2 required)
20-1403-1	Jack Riser Kit – set of two jack risers for Swing Air Jack. Adds 114 mm (4.5 in.) to jack lift height
20-1579-1	Center Lift Jack Adaptor for Swing Air Jack
51-1696-1	Additional Movable Work Step (2 are included with each RX40 lift rack)
20-593-1	Rack Wiring kit with 4 metal boxes

Site Requirements for RX40 Scissor Lift Rack



Site Requirements for RX40-P Flush Mount Scissor Lift Rack



See your authorized Hunter distributor for details on site requirements.

Because of continuing technological advances, specifications, models and options are subject to change without notice.

Optional Accessories

Oil Drain Pan



(20-2035-1) Holds 114 Liters (30 gallons). Includes drain hose and valve. Fits any Hunter lift rack.

Work Step



(51-1696-1) Work step makes custom steer or underhood shim work easier (2 included standard).

Communications Interface Kit



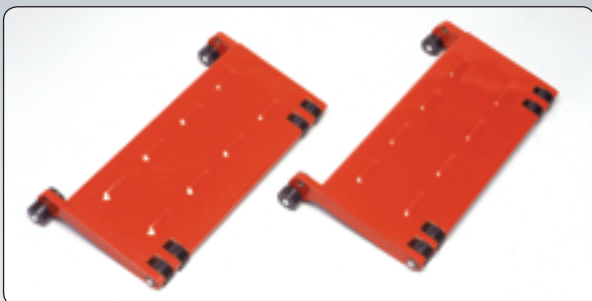
(20-593-1) Allows sensors to plug directly into the lift rack, eliminating tangled cables when using traditional sensors.

Lift Rack Workbox



(20-1638-1) Workbox clips onto either side of lift rack. Used for storing parts, shims and commonly used tools.

Stage 2 RX Approach Ramp Extensions



- ✓ RX ramp extension: 147-104-1 – Adds 324 mm (12.75 in.) to length of RX40 lift ramps (2 required).
- ✓ RX ramp extensions: 147-113-1 – Adds 451 mm (17.75 in.) to the length of RX40 (2 required).

Because of continuing technological advances, specifications, models and options are subject to change without notice.

Also Available:

- 20-2106-1 Stainless steel 50 mm mechanical turnplates (set of 2)
- 20-1849-1 Standard powder-coat painted steel 50 mm mechanical turnplates (set of 2)

Visit our Web Site: www.hunter.com

HUNTER
Engineering Company

11250 Hunter Drive, Bridgeton, MO 63044 U.S.A.
Tel: 1-314-731-3020 • FAX: 1-314-731-0132
E-mail: international@hunter.com



Mixed Sources

Product group from well-managed forests and other controlled sources
www.fsc.org Cert no. SW-COC-002105
© 1996 Forest Stewardship Council

Form 5309-TE-05, 02/10