

# *HawkEye Elite™ Alignment System*

*Greater profit and productivity through innovation*

**NEW!**



**HUNTER**  
Engineering Company

# Hunter's latest productivity features!

**PATENTED**



## New adaptor design!

- ▶ *Faster setups!*
- ▶ *No metal-to-metal contact!*
- ▶ *No knob twisting!*

**PATENTED**



## New target design!

- ▶ *Lighter design!*
- ▶ *Narrower profile!*
- ▶ *Faster readings!*



**NEW!**



**High-resolution cameras!**

Four high-resolution cameras provide alignment measurements with pin-point accuracy.



**Recall specs in a snap!**

Recall OE specs and vehicle-specific alignment procedures instantly.



**Integrated steering system reset!**

Reset computerized steering systems on a wide variety of vehicles with one simple tool.



**Convenient storage!**

Store targets within arm's reach to maximize productivity.



**EXCLUSIVE**



**QuickComp™!**

Compensate all wheels and capture initial measurements in one motion.

**EXCLUSIVE**



**New console design!**

Integrated storage and charging for popular accessories.\*

\* Remote Indicator sold separately.

# New QuickGrip® wheel adaptors & three-dimensional

Hunter's patented QuickGrip® adaptors and three-dimensional targets accelerate service with set-up times in seconds instead of minutes...

## Extremely Fast Installation



- ✓ Spring-loaded arms grip the tire
- ✓ Thumb switch secures the clamp
- ✓ Off-center clamping has no effect on accuracy

## Avoid Damage to Expensive Rims



- ✓ Grips tire, not rim
- ✓ No metal-to-metal contact
- ✓ Only protective ring contacts rim

## Less Weight



- ✓ Weighs only 6 lbs.
- ✓ Nearly 50% lighter than previous designs

## Space-Efficient Profile



- ✓ Approx. 9" profile
- ✓ Easy to work around
- ✓ Great for narrow bays

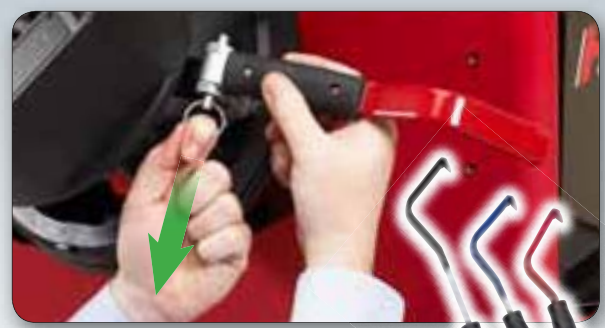


**NEW!**

**targets**



**Quick-Change Arms**



- ✓ Interchangeable arms cover up to 37" assemblies
- ✓ One arm fits approximately 90% of applications

**Deep-Wheel Extension**



- ✓ Deep rims or protruding hubs, no problem
- ✓ Standard accessory

**Wide-Angle Targets**



- ✓ Perform max steer procedure, as needed
- ✓ Standard accessory

**Low Maintenance**



- ✓ Shop-tough polymer structure withstands drops
- ✓ No electronics, cables or calibration
- ✓ Only occasional cleaning required

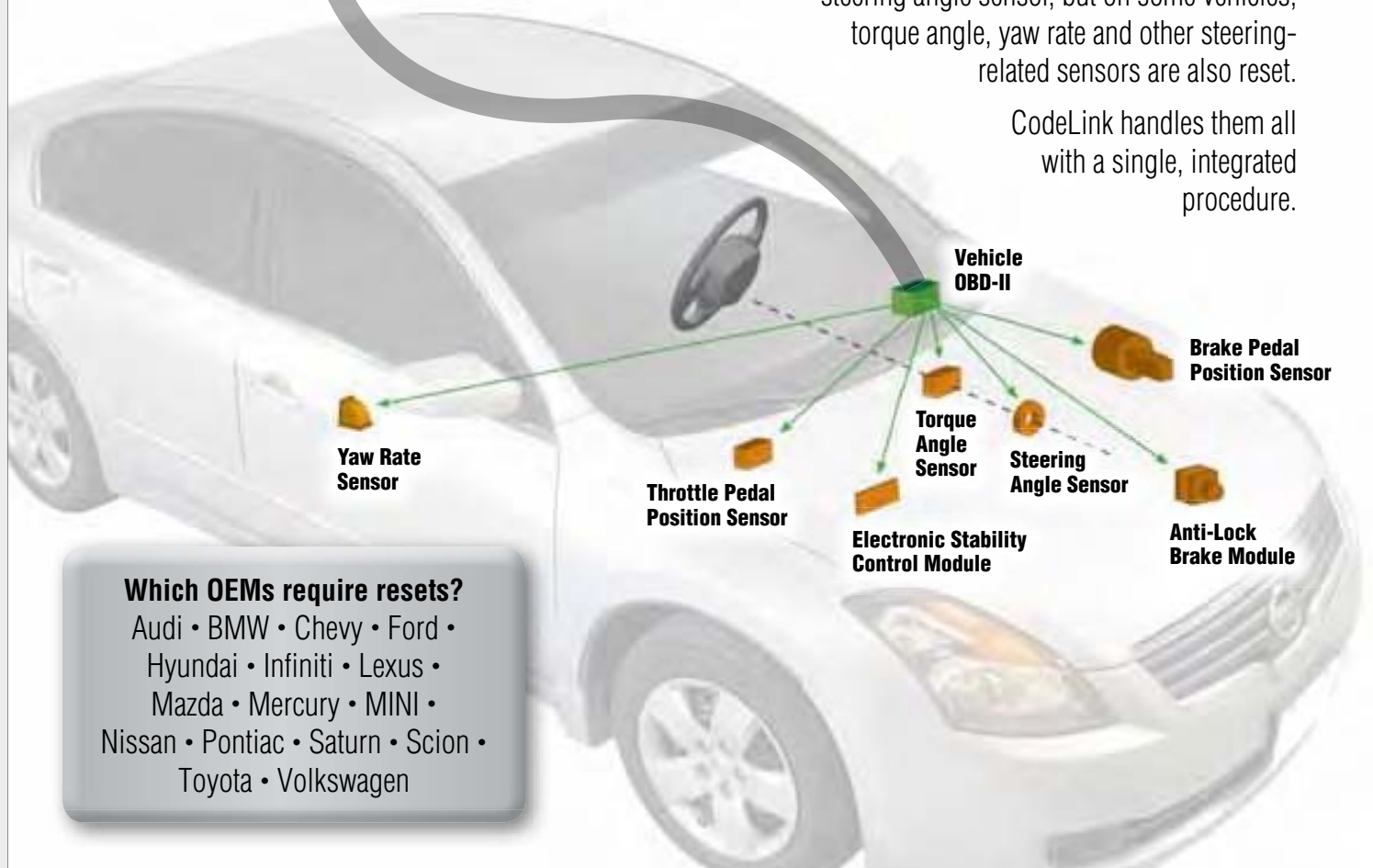
# CodeLink® – The new last step in alignment service

CodeLink® directly "links" the vehicle OBD-II to the aligner to reset steering system sensors, as required by the manufacturer.



Steering system reset typically involves resetting the steering angle sensor, but on some vehicles, torque angle, yaw rate and other steering-related sensors are also reset.

CodeLink handles them all with a single, integrated procedure.



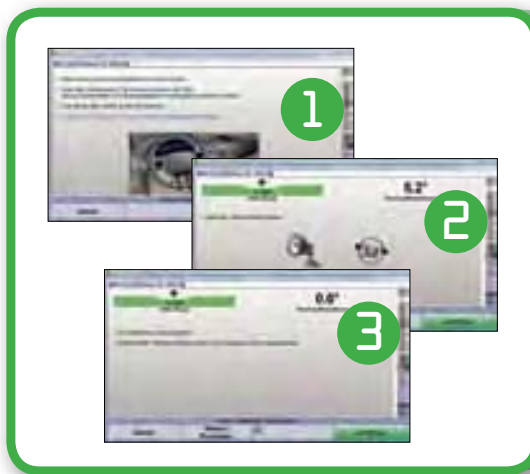
## Which OEMs require resets?

Audi • BMW • Chevy • Ford •  
Hyundai • Infiniti • Lexus •  
Mazda • Mercury • MINI •  
Nissan • Pontiac • Saturn • Scion •  
Toyota • Volkswagen

# CodeLink® provides a simple, integrated solution

## Simple and affordable

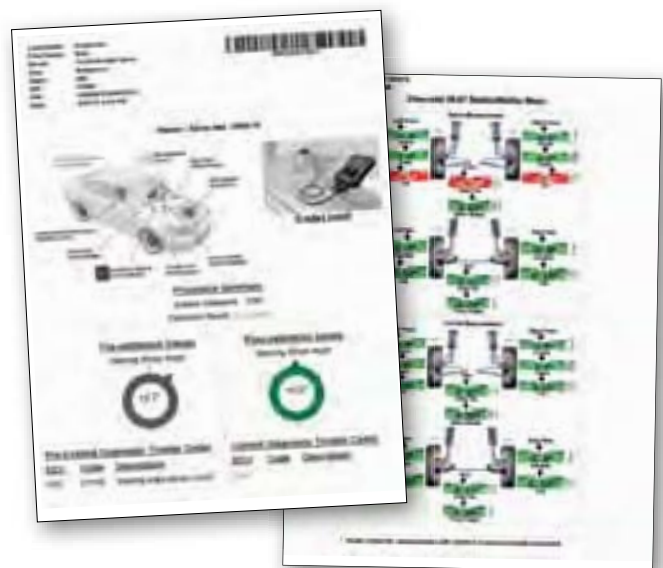
- ✓ Automatically identifies candidate vehicles.
- ✓ Incorporates reset steps into the alignment.
- ✓ Uses aligner screen to display instructions.
- ✓ Comes standard with system – no extra costs for expensive diagnostic scan tools.
- ✓ Updates automatically with system software upgrades.
- ✓ Dedicated alignment tool.



## Finishes the job right

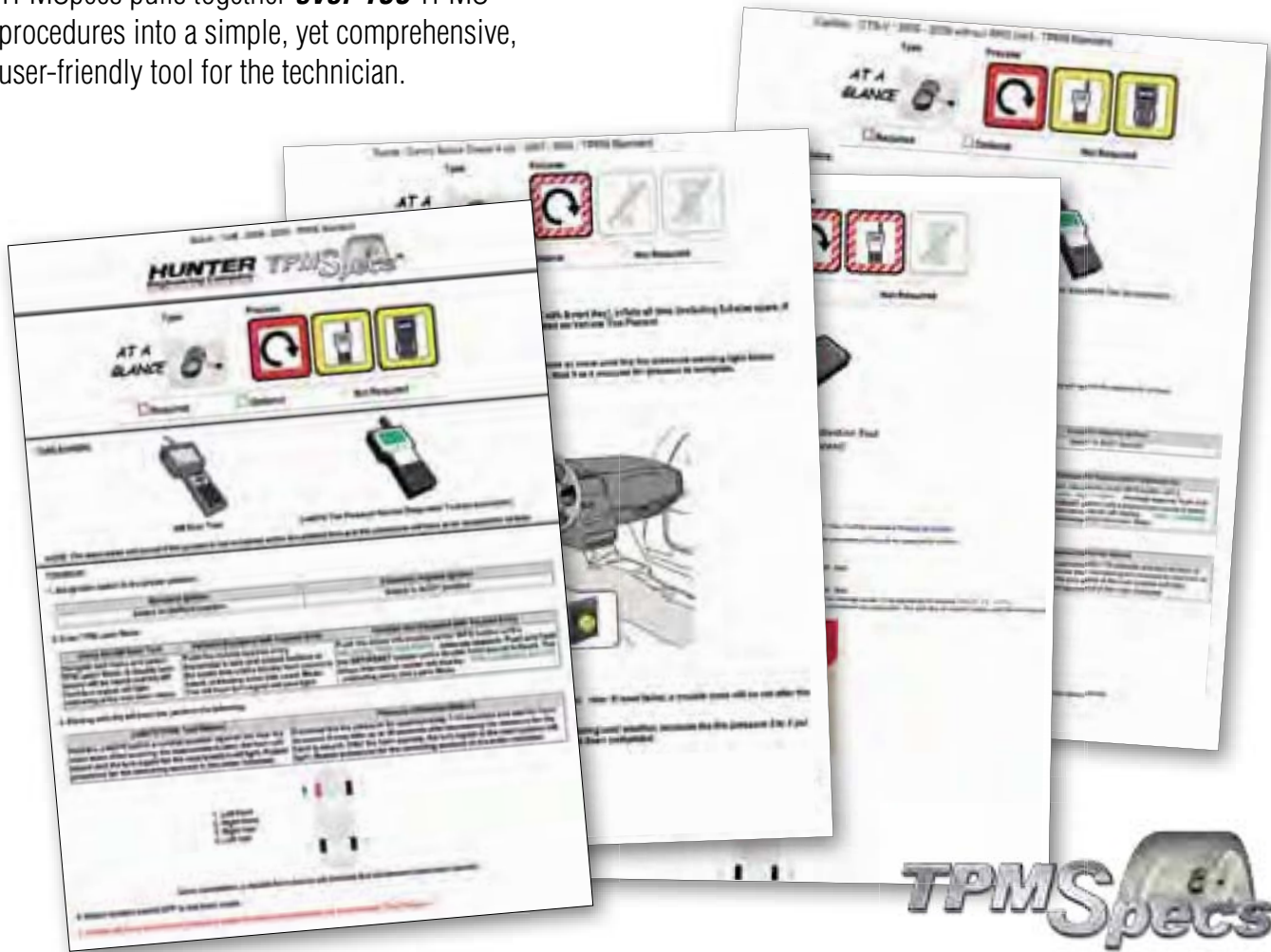
- ✓ No other reset tool matches CodeLink's patented integration with the alignment procedure.
- ✓ Guarantees precision with exact steering system sensor thresholds.
- ✓ Reduces errors that result in customer comebacks.

**Printed documentation confirms that steering system reset was completed properly**



# ***TPMSpecs™ brings concise TPMS information to your business!***

TPMSpecs pulls together **over 100** TPMS procedures into a simple, yet comprehensive, user-friendly tool for the technician.



**Save time finding vehicle TPMSpecs**



***Bar code scanner: Fast and easy, one-click TPMS access!***

**Hunter TPMSpecs available at check in too!**



***Present TPMS info to your customers through any internet-connected shop computer!***



# Additional features enhance alignment service!

**STANDARD**



## Bar code reader

Save time and avoid manual-entry errors. VIN bar code scanning instantly recalls vehicle-specific alignment specifications and alignment reference tools.

**STANDARD**



**NEW!**

## Drive-on camera

Safely and easily position a vehicle on a lift with one technician. WinAlign® software supports the use of a drive-on camera, which uses the aligner screen as a guide. (Drive-on camera sold separately.)

**STANDARD**

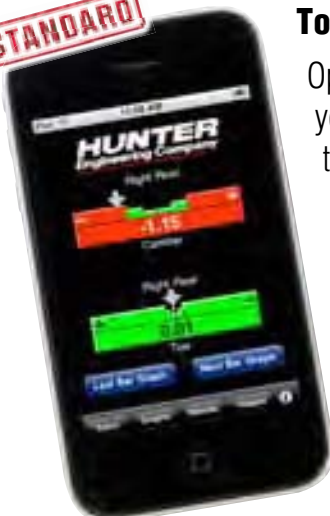
**NEW!**



## Customized column cap

Make your alignment bay stand out. Hunter's lighted sensor column cap can be customized with your logo or shop name.\*

**STANDARD**



## TouchRemote™ feature

Operate WinAlign using your Apple iPhone, iPod touch and iPad devices.\*\*

**OPTIONAL**

## Adjustable Clamp Arms



**NEW!**

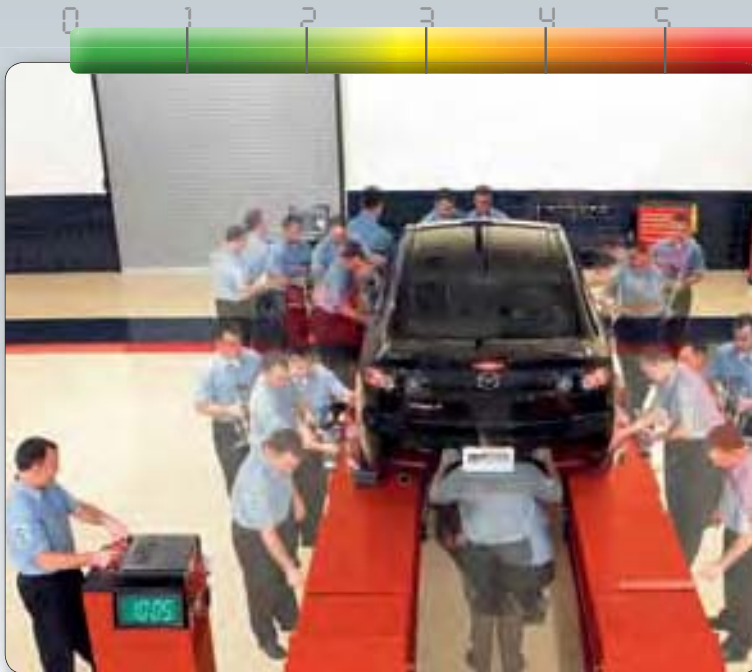
One set of adjustable arms covers the same clamping range as standard multi-arm kit

\*Available for most sensor configurations.

\*\*Standard with WA400 consoles running WinAlign 12 software. Requires a free app from iTunes® (search for "Hunter TouchRemote"). Requires Apple iPhone, iPod touch or iPad. (sold separately)

# Previous setups used valuable shop time...

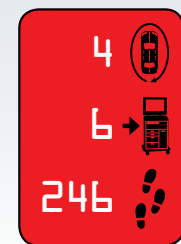
## Conventional electronic-sensor system – 10-minute-plus procedure



- ✓ Chock wheels and lift vehicle
- ✓ Jack up front and rear of vehicle
- ✓ Check air pressure and recall specs
- ✓ Mount all 4 sensors, compensate each sensor, and remove pins
- ✓ Lower rear and front of vehicle and jounce
- ✓ Steer caster
- ✓ Print results

10:00

### ACTIVITY TRACKER



**10:05 Total**

*Older technology requires long set-up times...*

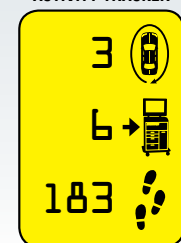
## Camera-sensor systems speed up the process



- ✓ Chock wheels and lift vehicle
- ✓ Check air pressure and recall specs
- ✓ Mount targets
- ✓ Roll backward, then forward to compensate
- ✓ Remove pins
- ✓ Steer caster
- ✓ Print results

4:00

### ACTIVITY TRACKER



**4:00 Total**

*Early camera technology improved efficiency...*

***...Today, present your results in just 90 seconds!***



***Hunter's HawkEye Elite and Premium RX Lift produce measurements in 90 seconds!***

**Hunter's 90-second procedure**

- ✓ Drive vehicle on, stop before turnplates
- ✓ Chock wheels and raise lift to work height
- ✓ Mount targets and set air pressure
- ✓ Roll forward to compensate sensors
- ✓ Scan VIN to recall specs and perform enhanced caster steer
- ✓ Vehicle results print automatically

***1:30 Total***

**ACTIVITY TRACKER**

1	
0	
72	

trip around the vehicle

trips to the console

total walking steps



**Fast printouts in 90 seconds!**

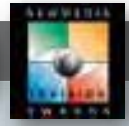
Use detailed printouts featuring your company's logo to sell more work.

# When it comes to award-winning software, WinAlign® 12 is unmatched!

## The importance of software...



Over 30 years of experience and the largest R&D department in the undercar industry bring you the most profitable and productive software on the market.



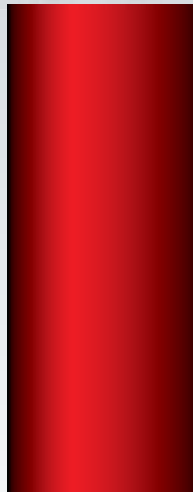
- ▶ The **most extensive** vehicle information database for North America's 220 million vehicles.
- ▶ **Vehicle-specific** procedures guide your technicians with step-by-step instructions.
- ▶ **Patented and award-winning power tools** complete the work accurately the first time, every time.
- ▶ **WinAlign 12 maximizes profit and productivity in your alignment bay.**



Ordinary systems simply present alignment readings



Ordinary camera systems simply speed up these readings



**WinAlign 12 maximizes profit and productivity in your alignment bay**

**PATENTED**



### ExpressAlign®

Perform every alignment with a streamlined procedure. ExpressAlign analyzes each job and presents the optimal action sequence with the minimum steps required.

**PATENTED**

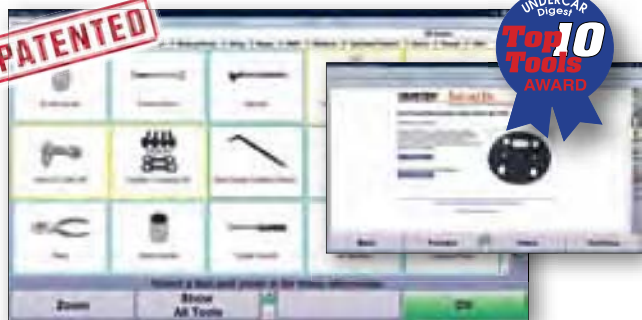


### WinToe®

Ensure a straight steering wheel every time without repeated adjustments or using a steering wheel holder.

**🚗 A time-saver on nearly every alignment.**

**PATENTED**



### Tools and Kits Database

Save trips back and forth to the tool box. Hunter presents all of the tools and aftermarket correction kits needed for each alignment.

**+** *Online ordering supported.*

**PATENTED**



### Virtual View®

Picture your alignment job in 3-D using real-time 3-D models. Used by experts and novices alike.

**+** *Every alignment can be shown in 3-D.*

**PATENTED**



### Control Arm Movement Monitor®

Cut adjustment times in half for front-shim, dual-cam or dual-slot vehicles. Step-by-step graphics let you get it right on the first try.

**+** *Over 60 million vehicles benefit.*

**PATENTED**



### Shim-Select® II

Eliminate confusing shim charts and tables. Shim Select II quickly calculates and displays the template you need for proper shim installation.

**+** *Over 30 million vehicles benefit.*

**PATENTED**



### Wheel-Off Adjustment

Speed the alignment process by making adjustments with the wheel removed.\*

**+** *Available when you need it.*

**PATENTED**



### Automatic Bushing Calculator®

Calculate the proper bushing size and position adjustment without wasting time with a zero bushing.

**+** *Over 10 million light trucks and vans benefit.*

\* Requires Wheel-Off Adjustment Kit 20-1978-1

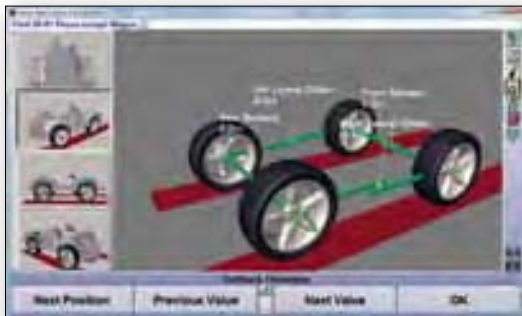
# Take your alignment business to the next level!

## Perform body shop alignments...



### Suspension Body Dimension Audit

Quickly screen vehicles to determine alignability and collision repair needs.



### Symmetry Angle Measurements

Instantly access symmetry angles and setback for your body shop customers.

## Perform specialty alignments...



### Live Ride Height Adjustment

Measure and adjust ride height in real-time.

**H** Over 20 million vehicles require ride height measurement to complete alignment service.

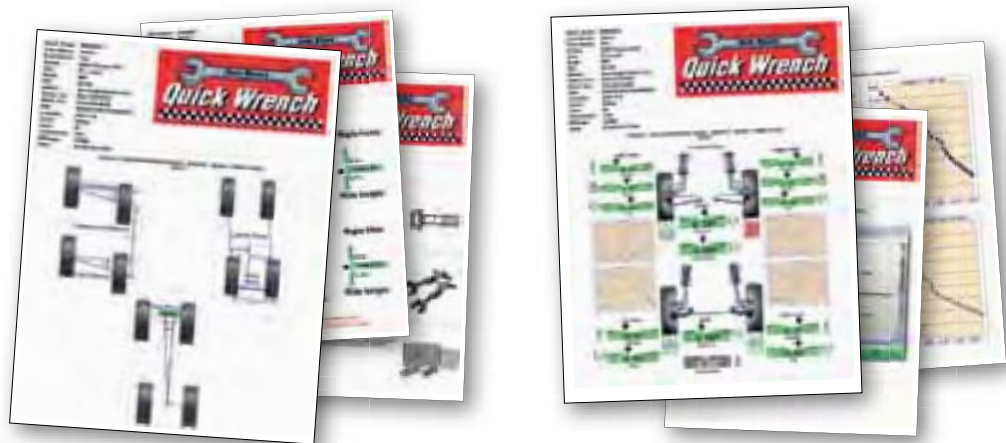


### WinAlign Tuner™

Perform alignments on tuned suspensions and other modified vehicles with tools to monitor tire wear and handling.

## Fast printouts to share with customers

Customize Hunter's detailed printouts to help explain service needs to customers or to document repairs.



# Help your customers make informed decisions!



## WinAlign® Video Library\*

**400+** videos and animations cover all aspects of wheel alignment today.

- ✓ Educate your customers
- ✓ Find answers to unusual problems
- ✓ Extend your service and profit opportunities
- ✓ Strengthen technician competency



## Point & Click Inspection Photos\*

**5,000+** vehicle-specific photos and illustrations to assist your shop.

- ✓ Show your customers their hidden repair needs
- ✓ Guide your technicians to the proper inspection points
- ✓ Extend your service and profit opportunities



## The latest specs available online

Download, access and communicate alignment service information through the Internet.

- ✓ WebSpecs®.NET specification database
- ✓ ShopResults.NET® online service\*\*
- ✓ UnderCarInfo.NET subscription\*\*



## WinAlign® printouts help sell work

Explain needed parts and repairs and show completed work to customers using detailed, color-coded printouts.

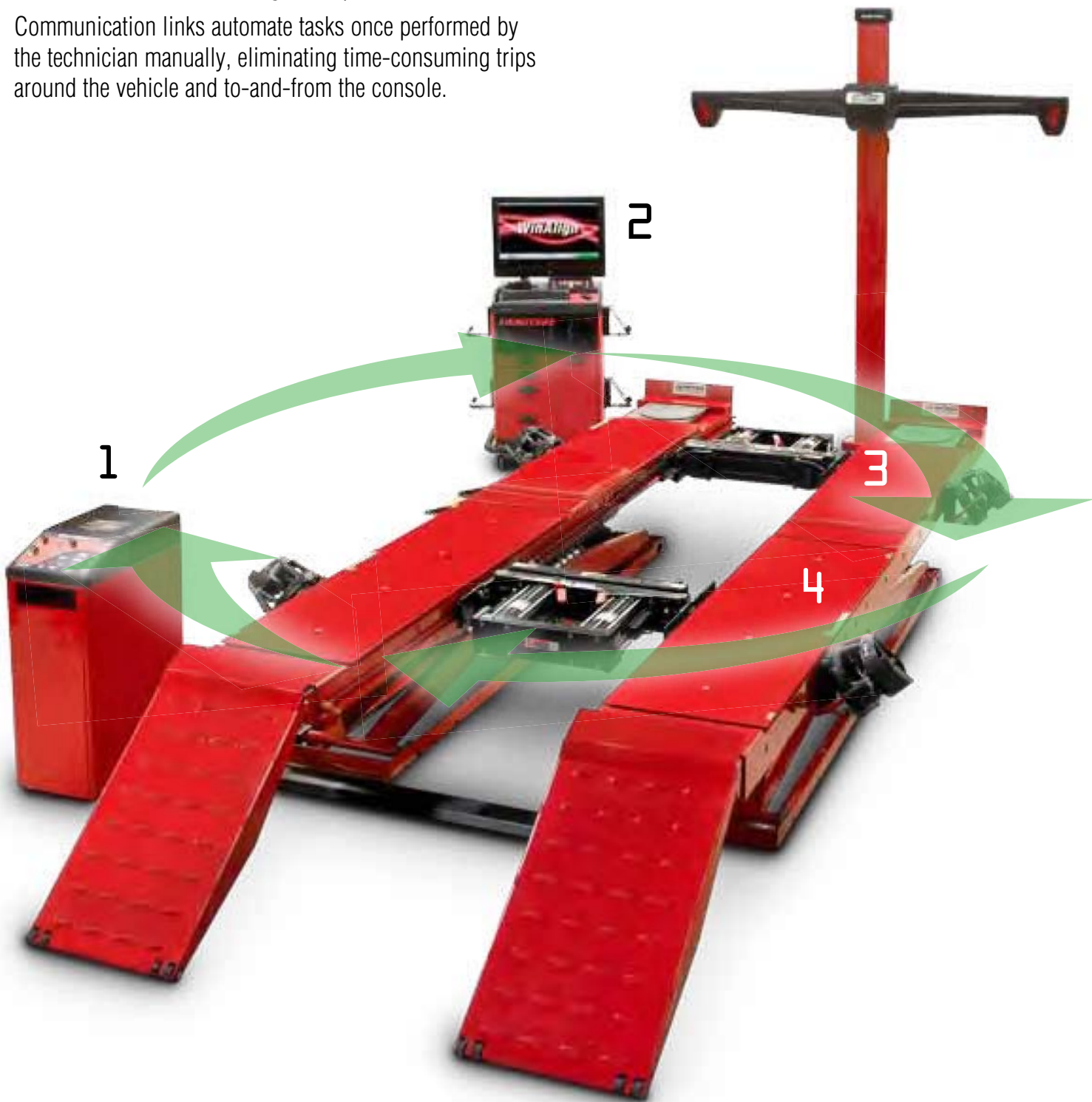
- ✓ **H Clear and detailed printouts help you communicate and build rapport with your customers and sell more alignments.**

# FIA Fully Integrated Alignment



FIA streamlines the entire alignment process.

Communication links automate tasks once performed by the technician manually, eliminating time-consuming trips around the vehicle and to-and-from the console.





**PATENTED**

1



### RX Scissor Lift console

- ✓ Raising the vehicle triggers the sensors to look for wheel targets
- ✓ Control PowerSlide® and Inflation settings on the lift console
- ✓ Store barcode scanner and CodeLink tool near the vehicle to save steps



**H** *AlignLights turn on automatically at alignment height*

**PATENTED**

2



### WinAlign console

- ✓ Centralized control of entire system
- ✓ Communicate directly with lift to set tire pressure and automatically operate turnplates and slipplates
- ✓ Guide the technician through the alignment process



**H** *Measurements are taken automatically once the fourth target is installed*

**PATENTED**

3



### PowerSlide®

- ✓ Slipplates and turnplates automatically lock and unlock at appropriate times
- ✓ No more struggles with lock pins



**H** *Auto-locking turnplates and slipplates save trips around the vehicle*



**PATENTED**

4



### Inflation Station

- ✓ Automatically inflate all four tires simultaneously
- ✓ Record starting and final pressure
- ✓ Hose recoils to keep work area clear



**H** *Software tracks before and after tire pressures for the customer's printout*



**NEW!**

## ***Choose the right sensor package for your shop!***



Fixed-column configurations fit most service bay applications.



Manually operated vertical camera configuration provides a full range of travel for additional lift height.



Cabinet-mounted configuration is mobile to service multiple alignment bays and provides a full range of travel for additional lift height.



Wall- and ceiling-mount configurations are perfect when space is at a premium.



Lift-column configurations automatically position the cameras to any lift height during the alignment process.



Floor-mounted overhead configurations are ideal for drive-through bays or to accommodate unique applications.

# Choose the right alignment console for your shop!

## WA400 Series consoles



**NEW!**



**22" Touchscreen option**

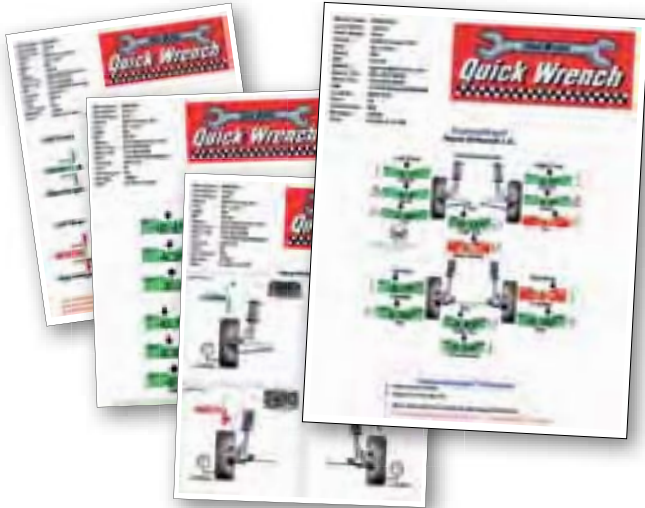
**Hardware**

		WA400 Series consoles
	<b>Processor</b>	2.93 GHz Intel® Core™ i3
	<b>Memory (DDR2)</b>	4 GB of DDR3 SDRAM
	<b>Hard drive</b>	250.0 GB SATA hard drive (or greater)
	<b>DVD-RW/CD-RW drive</b>	Standard
	<b>Monitor size</b>	22" touchscreen or 26" widescreen LCD (32" available on large console)
	<b>Wireless network module</b>	Standard
	<b>Operating system</b>	Windows® 7
	<b>Vehicle specifications (30 plus years)</b>	2 years free updates
	<b>Large console with drawers</b>	Yes
	<b>Compact console with printer drawer</b>	Yes
	<b>Console-top storage and charging station</b>	Yes

**Productivity tools**

<b>PATENTED</b>	<b>Award-winning WinAlign software</b>	Yes
<b>PATENTED</b>	<b>Real-time Specs delivered by web</b>	WebSpecs®
<b>PATENTED</b>	<b>Steering System Reset (integrated)</b>	Yes (with standard CodeLink™)
<b>STANDARD</b>	<b>Bar code reader</b>	Standard
<b>STANDARD</b>	<b>Complete TPMS Reset Database</b>	Yes
<b>PATENTED</b>	<b>Live Ride Height Adjustment</b>	Standard
<b>PATENTED</b>	<b>Fully Integrated Alignment</b>	Yes (FIA equipped rack required)
<b>PATENTED</b>	<b>Modified Vehicle Alignment</b>	WinAlign Tuner
<b>PATENTED</b>	<b>Vehicle Inspection with photos</b>	Standard
<b>PATENTED</b>	<b>Tools &amp; Kits – basic catalog</b>	Complete
<b>PATENTED</b>	<b>Tools &amp; Kits – video and photos</b>	Complete
<b>STANDARD</b>	<b>Equipment Video Help/Assistance</b>	Standard
<b>PATENTED</b>	<b>ShopResults (via ShopResults.NET™)</b>	1 year standard
<b>STANDARD</b>	<b>UnderCarInfo (via UnderCarInfo.NET)</b>	1 year standard
<b>PATENTED</b>	<b>Training and Productivity Aids</b>	4,000+ photos, 1,600+ illustrations 400+ videos & animations

# Increase revenue with Hunter merchandising!



Sell more alignments with **clear and *informative*** printouts

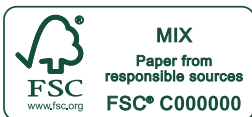
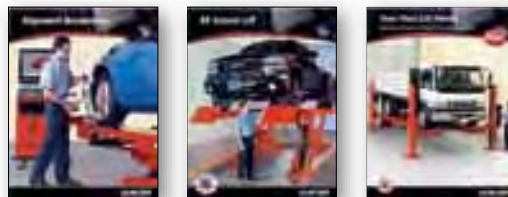


**NEW!**



Educate your customers about electronic steering system reset

Introduce your wheel alignment capabilities with great Point-of-Sale options from Hunter



Be sure to check out other Hunter literature for more quality products from Hunter Engineering.

**HUNTER**  
Engineering Company  
[www.hunter.com](http://www.hunter.com)

0211AAP10M.50